



NATIONAL
INSTITUTE OF
EDUCATION AND
TECHNOLOGY

2022

STUDENT PROSPECTUS

BRISBANE HOBART



Winner, 2021 – International Education and Training Provider of the Year

Export Awards 2021

FAST & AFFORDABLE TRAINING

From Certificate I to Graduate Diploma NIET delivers Australian qualifications that are useful and affordable.

We deliver training at our campuses in Brisbane & Hobart and offer a range of flexible online training solutions.



FAST-PACED & AFFORDABLE PRACTICAL TRAINING DESIGNED TO MEET THE AUSTRALIAN SKILLS SHORTAGES

A WORD FROM OUR DIRECTOR.

NIET is a diverse community of students, teachers, academics, and care professionals. Available to students and alumni alike is a wealth of professional experience, student support services, information, and resources. We have a high student graduate success rate, with cross-sectoral partners for real-world placement, a growing alumni program and a wealth of post-graduate learning opportunities.

Our practical courses provide students with the learning and hands-on experience required for a role in the ever-growing care services industry across Australia, and internationally, and our students gain direct entry to University, with academic credit available for Bachelor Degrees at ACU, Bond University, Griffith University, UTAS, and the University of Southern Queensland.

As the CEO, I want to see all our students become industry leaders, a hallmark of our 30-plus year tenure. At NIET Group, we have a reputation for producing bright and successful graduates, and I am confident that we will continue to do so today, tomorrow, and into the future.

Welcome to our colleges; I can't wait to see you on campus.

Troy Yue
NIET Group CEO



STUDENT EXPERIENCE

WHAT'S IT LIKE TO STUDY AT NIET?



STUDENT SERVICES?

Regardless of which college you study with, we provide student services to help you find answers about your enrollment, tuition fees, complaints, and the status of your assessments.

WHAT'S THE TRAINING LIKE?

All students receive the training required to help you attain a nationally recognised qualification, and you will undertake a mix of theory and practical instruction to help you with assessments.



INTERNATIONAL STUDENTS

NIET warmly welcomes students from around the world. With a long history of training international students, the institute provides a range of in-demand Australian qualifications with opportunities to package with high-quality Australian universities.

DENT EXPERIENCE STUDENT

RESOURCES & FACILITIES

All students get access to an online learning portal, and theory documentation to assist with their assessments, plus you get access to a campus, equipped with quiet study spaces.



CAMPUSES

Our institute has campuses in south Brisbane and Hobart, designed as for-purpose facilities for training delivery. They are located in convenient areas with nearby shops, cafes and accommodation services.



Friendly staff and excellent trainers.

INGRID LAVERDE



Excellent school!

**FERNANDO
LOPES CARVALHO**

CAMPUSES

WELCOME TO HOBART CENTRE

LEVEL 4, 2 KIRKSWAY PLACE, HOBART

Based right in Salamanca Place, NIET Group Hobart Centre is a regional campus delivering one of Tasmania's largest private vocational offerings. Located high on the fourth floor, views reach out across the Derwent river, with the campus affording study spaces tailor designed for learning & study. Hospitality students also benefit from proximity to outstanding venues located nearby.

The facility offers functional classrooms, modest breakout spaces, and equipped massage clinic and training facility, with the capability to offer walk-in massage therapy. Cookery facilities are offered off-site through our partners at the Clarence Turf Club.

BUSINESS, LEADERSHIP, REAL ESTATE

ELICOS & GENERAL ENGLISH, TRANSLATING & INTERPRETING

CHILDCARE, AGED CARE, COMMUNITY SERVICES

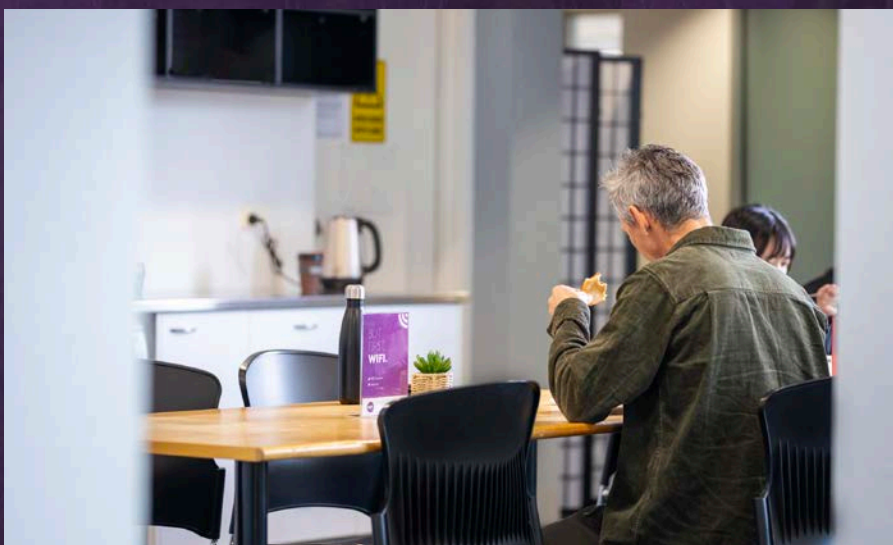
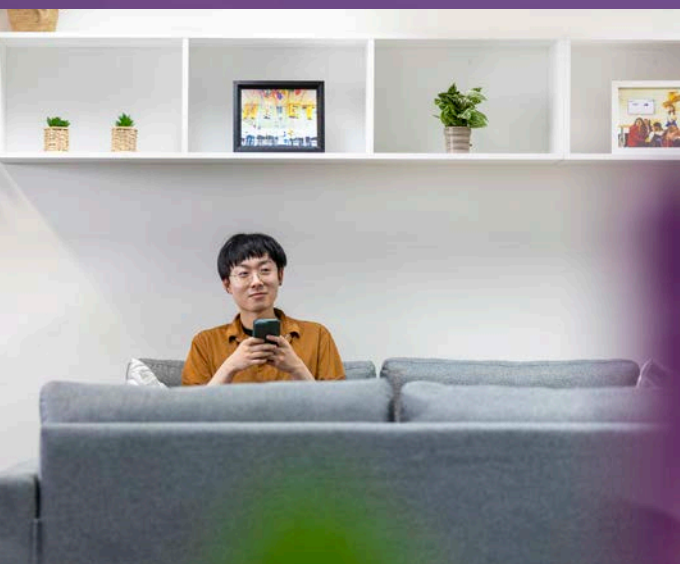
HOSPITALITY & COMMERCIAL COOKERY

WATCH
THE VIDEO:



NIET GROUP
**HBA
CTR**





WELCOME TO EIGHT MILE PLAINS CENTRE

8 CLUNIES ROSS COURT, EIGHT MILE PLAINS

This is the hub of the NIET's massage, business and hospitality programmes, NIET Group's Eight Mile Plains learning centre is based on the south side of Brisbane. With integrated operational cafe and massage facilities, Eight Mile Plains centre is the perfect facility to help our commercial cookery and massage students learn and grow, experiencing real-life businesses as they study.

With intimate & open-plan classrooms, designed around collaboration-focused 'round-table' concepts, students can enjoy minimalist study lounge, free from distractions. Plus, students have access to the group's training cafe, Okey Dokey.

BUSINESS, LEADERSHIP, REAL ESTATE & POST-GRADUATE

FASHION, ELICOS & GENERAL ENGLISH, TRANSLATING & INTERPRETING

CHILDCARE, AGED CARE, COMMUNITY SERVICES

HOSPITALITY & COMMERCIAL COOKERY

INFORMATION TECHNOLOGY

WATCH
THE VIDEO:



NIET GROUP
**EMP
CTR**





COURSES

Fast-paced & affordable practical training for international students, delivering skills & outcomes designed to meet the skills shortage

SOUTH BRISBANE HOBART

Established in
2016

4,500
Graduates

BUSINESS & LEADERSHIP

COMMERCIAL COOKERY

HOSPITALITY

REMEDIAL MASSAGE

CHILD CARE

AGED CARE & DISABILITY

COMMUNITY SERVICES

FASHION DESIGN

WHY STUDY WITH NIET?

The National Institute of Education & Technology is an international-focused Registered Training Organisation that delivers courses that are low-cost, flexible, and optimised to be the most direct route toward gaining a formal qualification in industries with a skills shortage.

Training at NIET is largely self-directed, making the journey easier and tailored to your needs - so you can fit training around work & lifestyle. To keep our fees low, we've designed a streamlined, minimalist experience that focuses on providing guidance and support via our modern online Learning Management System.

LOW FEES

FLEXIBLE STUDY

BASIC SUPPORT

ONLINE-ORIENTED TRAINING

SELF-STUDY FOCUSED

COMMERCIAL COOKERY
STUDENTS CAN UNDERTAKE
THE PRACTICAL COMPONENT
OF THEIR COURSE AT OUR OWN
RESTAURANT CHAIN.



Australia Academy International Trading As National Institute of Education CRICOS Provider Code 03590D | RTO 41422



WHAT CAN I STUDY?

EXPLORE OUR FACULTIES

Scan the code to view course schedules, intake dates, watch the video, see what you'll study, view tuition fees & access live chat for any questions.



ARTS & LANGUAGE

General English, Translating & Interpreting, Fashion



EDUCATION & CARE

Child Care, Disability Support, Aged Care, Community Services



HOSPITALITY & TOURISM

Commercial Cookery, Hospitality, Tourism



BUSINESS & LEADERSHIP

Foundations, Business, Leadership, Project Management, Post-Graduate



GETTING STARTED



HAVE A QUESTION?

Wondering about tuition fees, course content or schedule? Submit an enquiry – we'll help ASAP. Response times via the form are between 48-72 hours, and it's the fastest and most accurate way to get information from us.



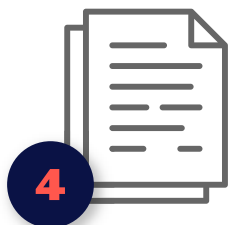
APPLY FOR A COURSE

Once you've chosen a course, applying is easy using our online form. Once you've applied, we'll get in contact if we have any questions, then if approved you'll receive a 'Letter of Offer' from us outlining terms, conditions & payment schedule.



LETTER OF OFFER & COE

To complete your enrolment, return your Letter of Offer signed, and make your first payment as outlined; note that due to conditions set by the Australian Government, applications may be rejected from countries deemed at high-risk of violating the terms of their visa.



STUDENT VISA

All international students must have a valid visa to travel to Australia; you apply for a student visa online – you will need supporting documentation, the CoE we issued you, as well as policy number for your health cover (OSHC).



STUDENT ACCOMMODATION

Charlton Brown partners with Brisbane's best student accommodation providers – Student One, Scape, Atira, & Urbanest. Head to their websites, pick your favourite, and use our website to book & receive an exclusive discount.



Welcome!

HAVE A QUESTION?
NIET.EDU.AU/ASK

READY TO APPLY
NIET.EDU.AU/APPLY



NATIONAL
INSTITUTE OF
EDUCATION AND
TECHNOLOGY

FAST-PACED & AFFORDABLE
PRACTICAL TRAINING DESIGNED
TO MEET THE AUSTRALIAN
SKILLS SHORTAGES







**NATIONAL
INSTITUTE OF
EDUCATION AND
TECHNOLOGY**

© NIET, 2022

ENQUIRIES@NIET.EDU.AU
NIET, RHODES BUSINESS SCHOOL, & CHARLTON BROWN
ARE REGISTERED TRADEMARKS OF NIET GROUP PTY LTD

NIET GROUP IS AN EDUCATION COLLECTIVE COMPRISED OF FOUR AUSTRALIAN REGISTERED TRAINING ORGANISATIONS, EACH DELIVERING QUALITY, AFFORDABLE QUALIFICATIONS IN A DIVERSE RANGE OF HIGH DEMAND INDUSTRIES, IN ADDITION TO MANAGED CAMPUSES IN QUEENSLAND OF MACLEAY COLLEGE. NIETGROUP DOES NOT DELIVER ANY TRAINING OR OFFER ANY FORMAL QUALIFICATIONS, RATHER IS A PLATFORM FOR THE COLLECTIVE MARKETING OF A SERIES OF BRANDS. TRAINING IS DELIVERED BY THE REGISTERED TRAINING ORGANISATIONS LISTED ON YOUR LETTER OF OFFER.

AUSTRALIA ACADEMY INTERNATIONAL (T/A NATIONAL INSTITUTE OF EDUCATION & TECHNOLOGY, RTO 41422 CRICOS 03590D)

FEATURES, PRODUCTS & SERVICES REFERRED TO IN THIS DOCUMENT FORM PART OF NIET GROUP'S FORWARD COMMITMENTS TO 'VISION 2030', A CONTINUOUS IMPROVEMENT PRODUCT DESIGNED TO ULTIMATELY PROVIDE A QUALITY STUDENT EXPERIENCE. AS SUCH, CERTAIN FEATURES, PRODUCTS & SERVICES MAY NOT BE AVAILABLE AT ALL CAMPUSES OR COLLEGES AT TIME OF ENROLLMENT OR THROUGHOUT THE PERIOD OF STUDY.